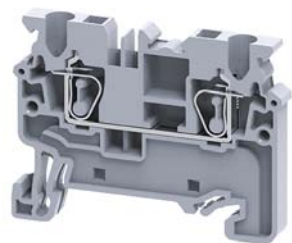


SPRING CLAMP TERMINAL BLOCKS



CX2.5

FEED THROUGH SPRING CLAMP

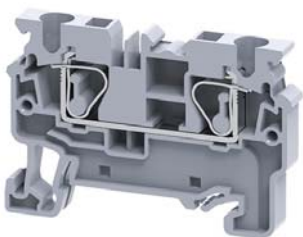
2.5mm²

Description	Part No.
Conductor cross section stranded, 0.2 - 2.5mm ²	CX2.5
Dimensions (L x W x H), 50 x 5 x 38mm	
Colour "grey", 1000V/24A	
Connection: Feed through	

ACCESSORIES

Marking tag: K5 size	
Endplate:	EPCX2.5
Screw-less end clamp:	CA103
Insulated shorting link:	JX2.5/*

* Specify 2, 3, 4 or 10 way at time of order.



CX4

FEED THROUGH SPRING CLAMP







4mm²

Description	Part No.
Conductor cross section stranded, 0.2 - 4mm ²	CX4
Dimensions (L x W x H), 54.8 x 6 x 38mm	
Colour "grey", 1000V/32A	
Connection: Feed through	

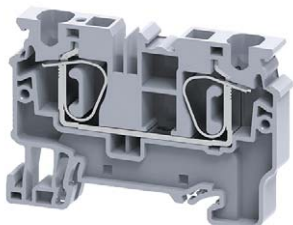
ACCESSORIES

Marking tag: K6 size	
Endplate:	EPCX4
Partition plate:	PPCX4
End clamp:	CA702
High end clamp:	CA802
Insulated shorting link:	JX4/*

* Specify 2, 3, 4 or 10 way at time of order.

 EPCX2.5 EPCX4	 PPCX4	 CA103	 CA702	 CA802	 JX2.5/* JX4/*
---	--	--	---	--	---

SPRING CLAMP TERMINAL BLOCKS



CX6

FEED THROUGH SPRING CLAMP

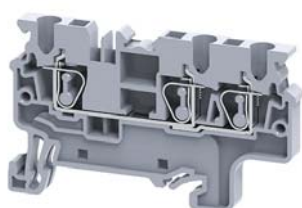
6mm²

Description	Part No.
Conductor cross section stranded, 0.2 - 6mm ²	CX6
Dimensions (L x W x H), 62.1 x 8 x 42.5mm	
Colour "grey", 1000V/41A	
Connection: Feed through	

ACCESSORIES

Marking tag: K8 size	
Endplate:	EPCX6
Partition plate:	PPCX10
End clamp:	CA702
High end clamp:	CA802
Insulated shorting link:	JX6/*

* Specify 2, 3, 4 or 10 way at time of order.



CX2.5/3

MULTIPLE CONNECTION SPRING CLAMP

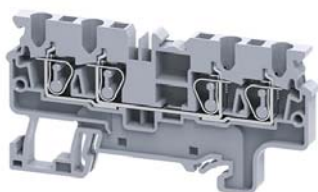
2.5mm²

Description	Part No.
Conductor cross section stranded, 0.2 - 2.5mm ²	CX2.5/3
Dimensions (L x W x H), 62.2 x 5 x 37.6mm	
Colour "grey", 1000V/24A	
Connection: Feed through 1 IN / 2 Out	

ACCESSORIES

Marking tag: K5 size	
Endplate:	EPCX2.5/3
End clamp:	CA702
High end clamp:	CA802
Screw-less end clamp:	CA103
Insulated shorting link:	JX2.5/*

* Specify 2, 3, 4 or 10 way at time of order.








CX2.5/4

Description	Part No.
Conductor cross section stranded, 0.2 - 2.5mm ²	CX2.5/4
Dimensions (L x W x H), 74.7 x 5 x 37.6mm	
Colour "grey", 1000V/24A	
Connection: Feed through 2 IN / 2 Out	

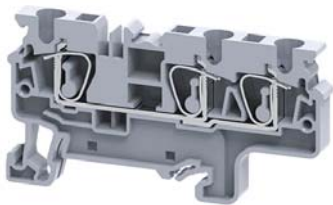
ACCESSORIES

Marking tag: K5 size	
Endplate:	EPCX2.5/4
Partition plate:	PPCX4/4
End clamp:	CA702
High end clamp:	CA802
Screw-less end clamp:	CA103
Insulated shorting link:	JX2.5/*

* Specify 2, 3, 4 or 10 way at time of order.

 EPCX6 EPCX2.5/3 EPCX2.5/4	 PPCX10 PPCX4/4	 CA702	 CA802	 CA103	 JX6/* JX2.5/*
--	--	--	---	--	---

SPRING CLAMP TERMINAL BLOCKS



CX4/3

MULTIPLE CONNECTION SPRING CLAMP 4mm²

Description	Part No.
Conductor cross section stranded, 0.2 - 4mm ²	CX4/3
Dimensions (L x W x H), 70.5 x 6 x 37.6mm	
Colour "grey", 1000V/32A	
Connection: Feed through 1 IN / 2 Out	

ACCESSORIES

Marking tag: K5 size	
Endplate:	EPCX4/3
Partition plate:	PPCX4/3
End clamp:	CA702
High end clamp:	CA802
Screw-less end clamp:	CA103
Insulated shorting link:	JX4/*

* Specify 2, 3, 4 or 10 way at time of order.



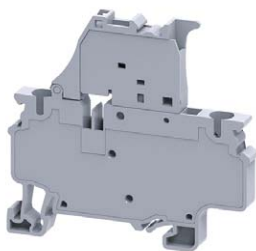
CX4/4

Description	Part No.
Conductor cross section stranded, 0.2 - 4mm ²	CX4/4
Dimensions (L x W x H), 86.2 x 6 x 37.6mm	
Colour "grey", 1000V/32A	
Connection: Feed through 2 IN / 2 Out	

ACCESSORIES

Marking tag: K5 size	
Endplate:	EPCX4/4
Partition plate:	PPCX4/4
End clamp:	CA702
High end clamp:	CA802
Screw-less end clamp:	CA103
Insulated shorting link:	JX4/*

* Specify 2, 3, 4 or 10 way at time of order.



CXF4

FUSE TERMINAL SPRING CLAMP 4mm²

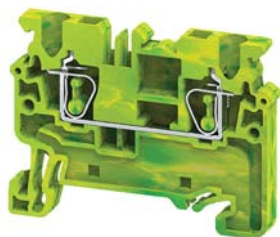
Description	Part No.
Conductor cross section stranded, 0.2 - 4mm ²	CXF4
Dimensions (L x W x H), 6 x 6 x 68mm	
Colour "grey", 1000V/10A	
Connection: Fuse terminal	

ACCESSORIES

Marking tag: K8 size (on terminal)	
Marking tag: K2 size (on fuse carrier)	
End clamp:	CA702
High end clamp:	CA802
Screw-less end clamp:	CA103

EPCX4/3 EPCX4/4	PPCX4/3 PPCX4/4	CA702	CA802	CA103	JX4/*

SPRING CLAMP TERMINAL BLOCKS



CXG2.5

EARTH TERMINAL SPRING CLAMP

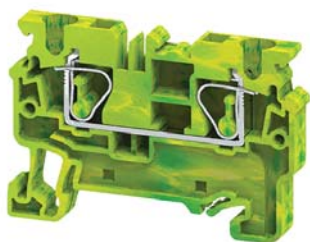
2.5mm²

Description	Part No.
Conductor cross section stranded, 0.2 - 2.5mm ²	CXG2.5
Dimensions (L x W x H), 49.7 x 5 x 37.6mm	
Connection: Feed through, makes contact with mounting rail	

ACCESSORIES

Marking tag: K5 size	
Endplate:	EPCX2.5
Partition plate:	PPCX2.5
End clamp:	CA702
High end clamp:	CA802
Screw-less end clamp:	CA103
Insulated shorting link:	JX2.5/*

* Specify 2, 3, 4 or 10 way at time of order.



CXG4

EARTH TERMINAL SPRING CLAMP

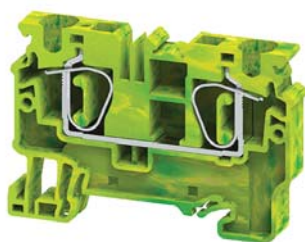
4mm²

Description	Part No.
Conductor cross section stranded, 0.2 - 4mm ²	CXG4
Dimensions (L x W x H), 54.8 x 6 x 37.6mm	
Connection: Feed through, makes contact with mounting rail	

ACCESSORIES

Marking tag: K6 size	
Endplate:	EPCX4
Partition plate:	PPCX4
End clamp:	CA702
High end clamp:	CA802
Screw-less end clamp:	CA103
Insulated shorting link:	JX4/*

* Specify 2, 3, 4 or 10 way at time of order.



CXG6

EARTH TERMINAL SPRING CLAMP







6mm²

Description	Part No.
Conductor cross section stranded, 0.2 - 6mm ²	CXG6
Dimensions (L x W x H), 62.1 x 8 x 42.4mm	
Connection: Feed through, makes contact with mounting rail	

ACCESSORIES

Marking tag: K8 size	
Endplate:	EPCX6
Partition plate:	PPCX10
End clamp:	CA702
High end clamp:	CA802
Screw-less end clamp:	CA103
Insulated shorting link:	JX6/*

* Specify 2, 3, 4 or 10 way at time of order.

					
EPCX2.5 EPCX4 EPCX6	PPCX2.5 PPCX4 PPCX10	CA702	CA802	CA103	JX2.5/* JX4/* JX6/*